

# User Manual

<b>01</b>	<b>OVERVIEW OF THE UNIT - P3</b>	<b>02</b>	<b>SETTING - P4-5</b>
	<ul style="list-style-type: none"><li>• This section introduces the main screen layout of the head unit, along with a quick guide to the touch controls located on the left side.</li></ul>		<ul style="list-style-type: none"><li>• Customize system preferences such as language, date &amp; time, wallpaper, lantern settings, and more.</li></ul>
<b>03</b>	<b>APPLE CARPLAY - P6</b>	<b>04</b>	<b>ANDROID AUTO - P7</b>
	<ul style="list-style-type: none"><li>• Connect your iPhone via USB or wirelessly to access CarPlay features such as Maps, Music, Messages, and Siri on the head unit.</li></ul>		<ul style="list-style-type: none"><li>• Connect your Android phone via USB or wirelessly to use Android Auto features like Google Maps, Music, Calls, and Google Assistant on the head unit.</li></ul>
<b>05</b>	<b>ISOMIRROR - AIRPLAY - P8</b>	<b>06</b>	<b>AUTOLINK - P9</b>
	<ul style="list-style-type: none"><li>• Mirror your iPhone's screen to the head unit—wired or wireless—for easy access to apps, videos, and more.</li></ul>		<ul style="list-style-type: none"><li>• Mirror your Android phone's screen to the head unit—wired or wireless—for easy access to apps, videos, and more.</li></ul>
<b>07</b>	<b>RADIO - P10</b>	<b>08</b>	<b>BLUETOOTH MUSIC- P11</b>
	<ul style="list-style-type: none"><li>• Listen to your favorite FM or AM radio stations through the head unit for live broadcasts and music.</li></ul>		<ul style="list-style-type: none"><li>• Stream music wirelessly from your smartphone to the head unit via Bluetooth for a seamless listening experience.</li></ul>
1			

# User Manual

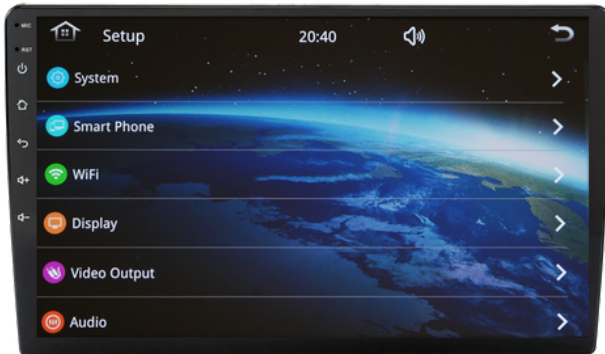
<b>09</b>	<b>BLUETOOTH PHONE- P11</b>	<b>10</b>	<b>USB - P12</b>
<ul style="list-style-type: none"><li>• Make hands-free calls and access contacts directly from the head unit via Bluetooth.</li></ul>		<ul style="list-style-type: none"><li>• Connect a USB drive to play music, videos, and access files directly on the head unit.</li></ul>	
<b>11</b>	<b>EQ - P13-15</b>	<b>12</b>	<b>STEERING WHEEL CONTROL- P16</b>
<ul style="list-style-type: none"><li>• Adjust volume balance and fine-tune audio with the band equalizer for the perfect sound experience.</li></ul>		<ul style="list-style-type: none"><li>• Follow the steps to set up and program your steering wheel controls for audio, calls, and other functions.</li></ul>	
<b>2</b>			

## OVERVIEW OF THE UNIT



1. Built-in Microphone
2. Reset (Insert pin, wait, release—device resets to default)
3. Home page
4. Return to the last page
5. Volume up
6. Volume down
7. Time
8. Volume adjust (up and down)

## SETTING



### • System

- This setting allows you to customize key aspects of your head unit. You can change the language, set the date and time, choose a wallpaper, and adjust the right-hand or left-hand drive display setting for optimal viewing.

### • Smart Phone

- This setting allows you to enable or disable smartphone connection features such as Apple CarPlay, Android Auto, AirPlay, and AutoLink.

### • Wifi

- This setting allows you to select a Wi-Fi channel between 36 and 161. Lower channels provide stable short-range connectivity, while higher channels offer stronger signals and improved range in certain environments.

### • Display

- This setting allows you to adjust various display preferences, including the dimmer lever, brightness, saturation, chromaticity, and contrast. You can fine-tune these settings for optimal viewing based on lighting conditions.

### • Video output

- Note: For further information or assistance, please consult your installer.



## SETTING



### • Audio

- This setting allows you to adjust various audio preferences, including volume, equalizer (EQ), delay, and filter. You can fine-tune these options to enhance sound quality and tailor it to your preferences.

### • Radio area

- This setting allows you to select the radio area. For use in New Zealand, choose 'Aus' to ensure the radio frequencies are correctly tuned for the region.

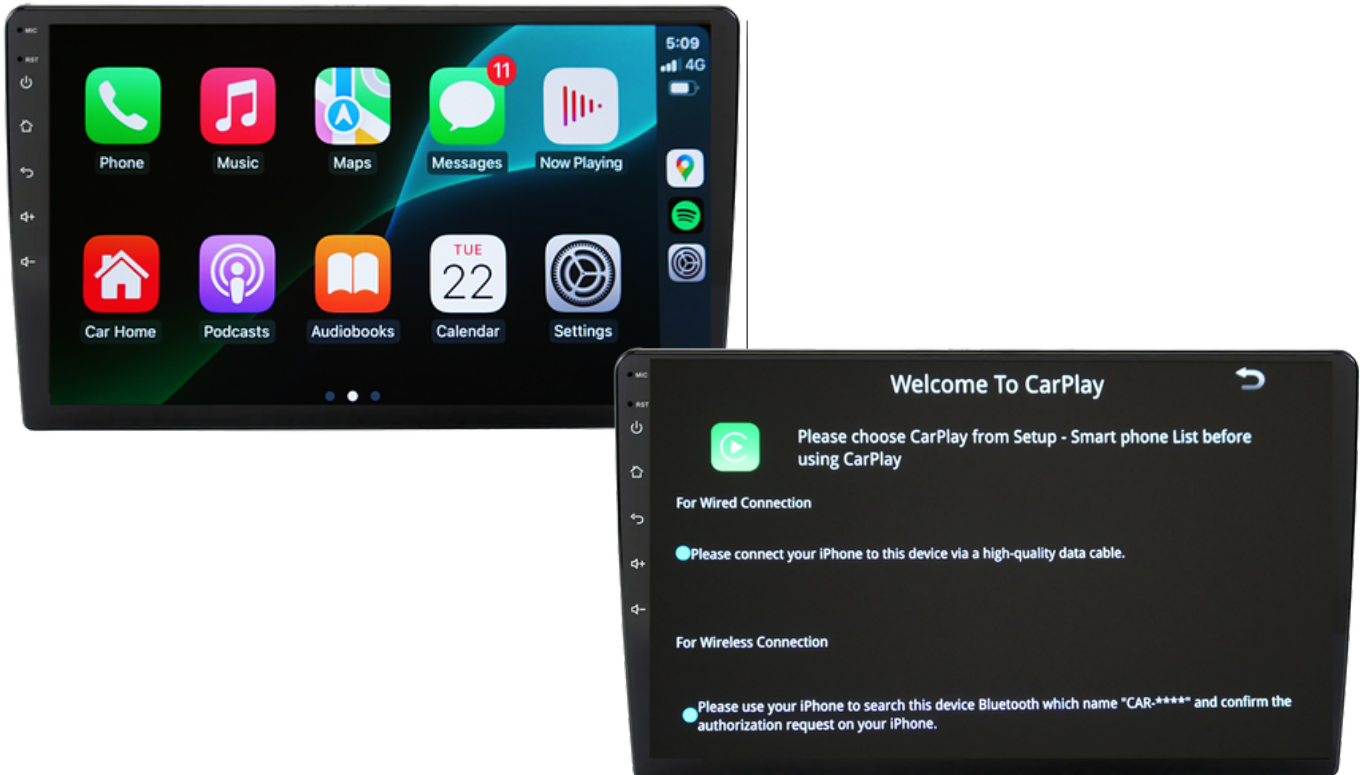
### • Driving

- This setting allows you to enable parking lines in the rearview camera, receive a warning when video is displayed while driving to prevent distractions, select the appropriate camera format (NTSC or PAL) for compatibility with your system, and automatically mute audio when the car is in reverse for clearer rearview camera visuals. These settings help improve safety and convenience while driving and parking.
- Note: Radar and front radar are optional features.

### • Canbus Info

- Note: This function is optional and requires a compatible CANBUS decoder. Features may vary depending on the vehicle model.

## APPLE CARPLAY



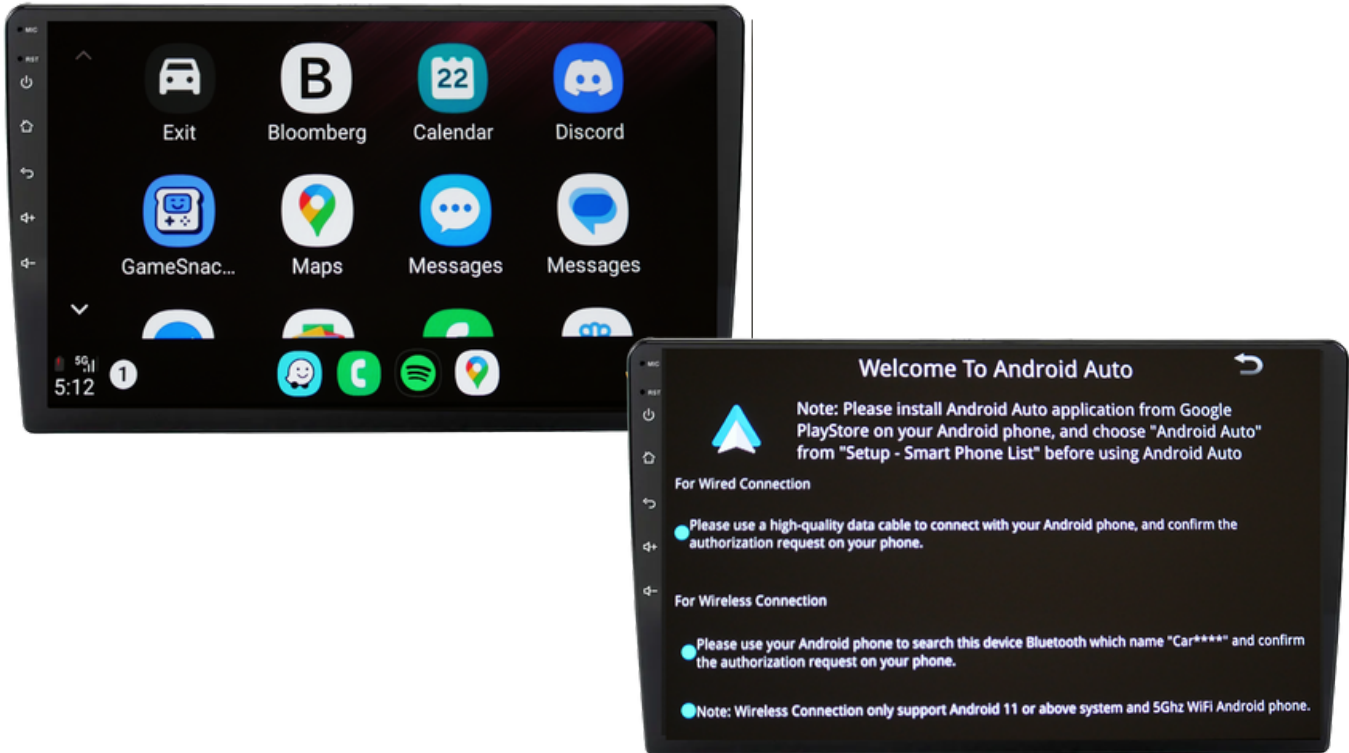
### Connecting Your iPhone Wired Connection

1. Use a high-quality data cable to connect your iPhone to the device.
2. ⚠ Note: Some cables are charging-only and may not work for data transfer.

### Wireless (Bluetooth) Connection

1. On your iPhone, go to Settings > Bluetooth.
2. Look for the device named "CAR-\*\*\*\*" in the list of available devices.
3. Tap to connect and confirm the pairing request when prompted.
4. Once connected, CarPlay will be available.
5. ⚠ Note: If CarPlay doesn't launch:  
Go to Settings > General > CarPlay on your iPhone.  
Find and select "CAR-\*\*\*\*" to complete the connection.

## ANDROID AUTO



### Connecting Your Android Device

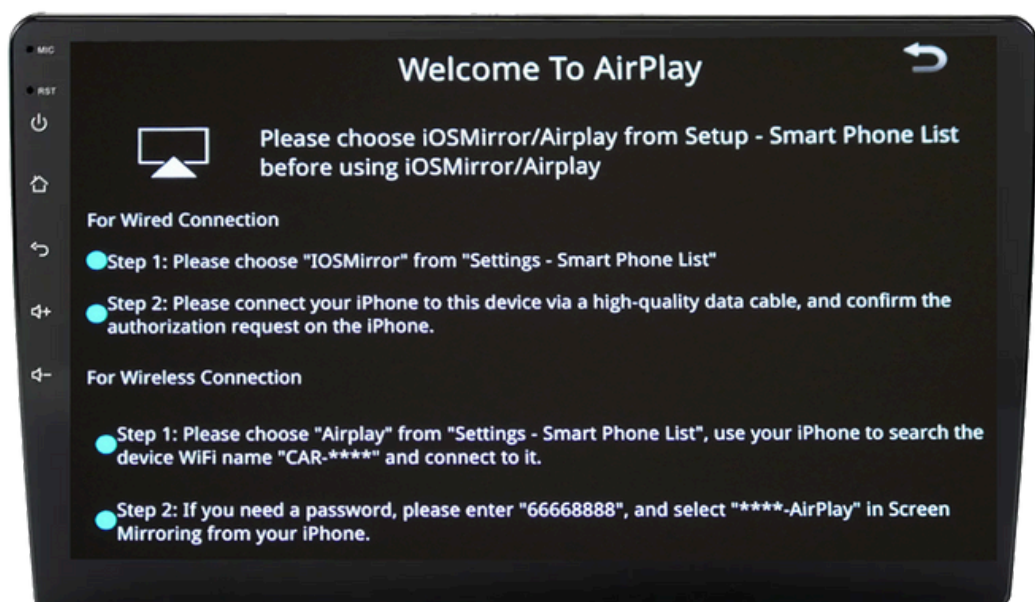
#### Wired Connection

1. Use a high-quality USB data cable to connect your Android device to the system.
2. ⚠️ Note: Some cables are charging-only and may not work for data transfer.

#### Wireless (Bluetooth) Connection

1. On your Android device, go to Settings > Bluetooth.
2. Enable Bluetooth if it's not already on.
3. Look for the device named "CAR-\*\*\*\*" in the list of available devices.
4. Tap to pair and accept the pairing request if prompted.
5. Once connected, Android Auto will be available.

## IOSMIRROR - AIRPLAY



### iPhone Connection Instructions

#### Wired Connection (iOSMirror)

1. On the head unit, go to Settings > Smartphone > Smartphone List and select "iOSMirror."
2. Connect your iPhone to the head unit using a high-quality USB data cable.

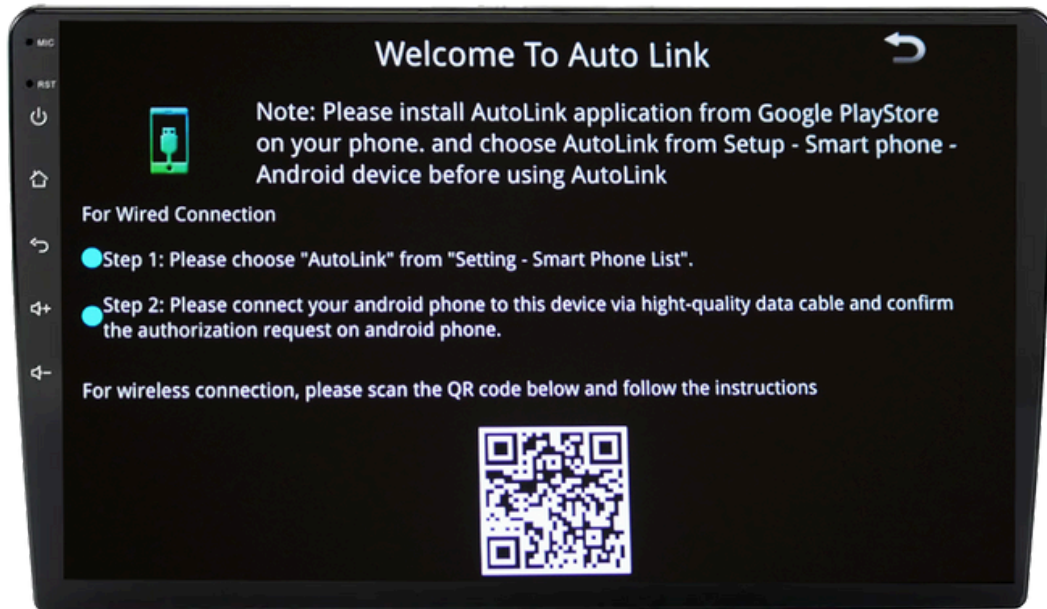
⚠ Note: Some cables are charging-only and may not work for data transfer.

#### Wireless Connection (AirPlay)

1. On the head unit, go to Settings > Smartphone List and select "AirPlay."
2. On your iPhone, open Wi-Fi settings and connect to the device's Wi-Fi named "CAR-\*\*\*\*."
3. If prompted for a password, enter: 66668888
4. Swipe down on your iPhone to open Control Center, then tap "Screen Mirroring."
5. Select "\*\*\*\*-AirPlay" from the list to begin wireless screen mirroring.

⚠ Note: The mirroring function may not be supported on all phone models.

## AUTO LINK



### Android Connection Instructions

#### Wired Connection (AutoLink)

1. On the head unit, go to Settings > Smartphone > Smartphone List and select "AutoLink."
2. Connect your Android device to the head unit using a high-quality USB data cable.

⚠ Note: Some cables are charging-only and may not work for data transfer.

#### Wireless Connection (AutoLink)

For wireless connection, please scan the QR code below and follow the instructions.

⚠ Note: The mirroring function may not be supported on all phone models.



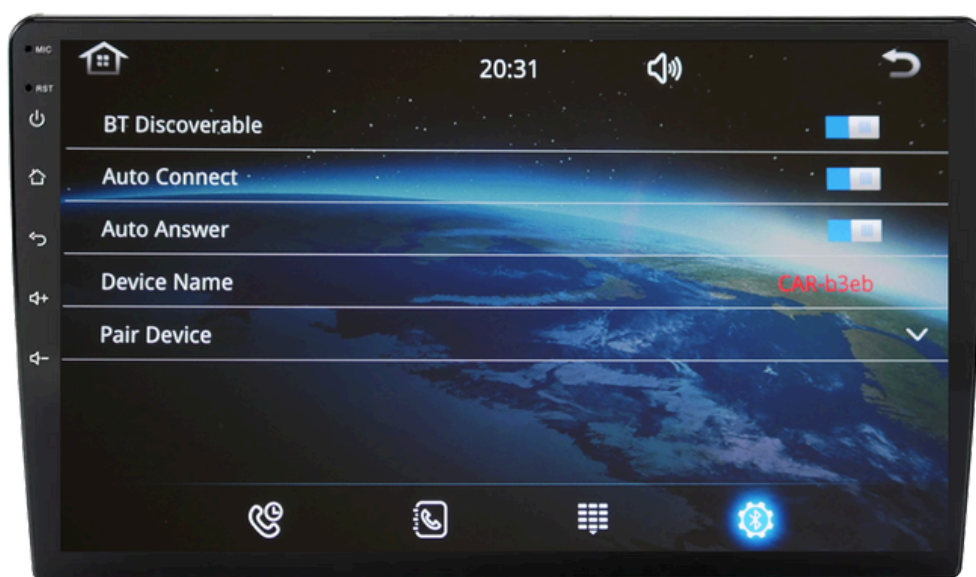
## RADIO OPERATION



1. Return to Home Page - Quickly go back to the main menu.
2. Adjust Volume - Easily raise or lower the sound to your liking.
3. Auto Tuning - Automatically finds and locks onto stations with strong reception.
4. AF (Alternative Frequency) - Seamlessly switches to a stronger frequency of the same station for uninterrupted listening.
5. TA (Traffic Announcement) - Automatically tunes in to traffic updates when available.
6. PTY (Program Type) - Lets you search for specific radio content like news, music, or sports.
7. Mute/Unmute Audio - Instantly turn the volume on or off.
8. Switch FM/AM Band - Toggle between FM and AM radio frequencies.
9. Return to the first saved station.
10. Stereo Mode - Enable or disable left and right channels for immersive, directional sound.
11. Auto Store - Automatically scans and saves stations with the strongest signals.
12. LOC (Local Seek) - Filters and plays only strong, nearby stations, ignoring weaker signals.



## BLUETOOTH MUSIC



To connect via Bluetooth:

1. On your phone, open Settings > Bluetooth and turn Bluetooth ON.
2. From the list of available devices, find and select "CAR-\*\*\*\*."
3. If you prefer to use Bluetooth only for music and phone calls, choose the option "Use Bluetooth Only."
4. Once connected, you can:
  - Play music wirelessly through the car speakers
  - Make and receive phone calls via the head unit using your phone.
5. You can also manage Bluetooth settings from here—such as Auto Answer and Auto Connect

## BLUETOOTH PHONE

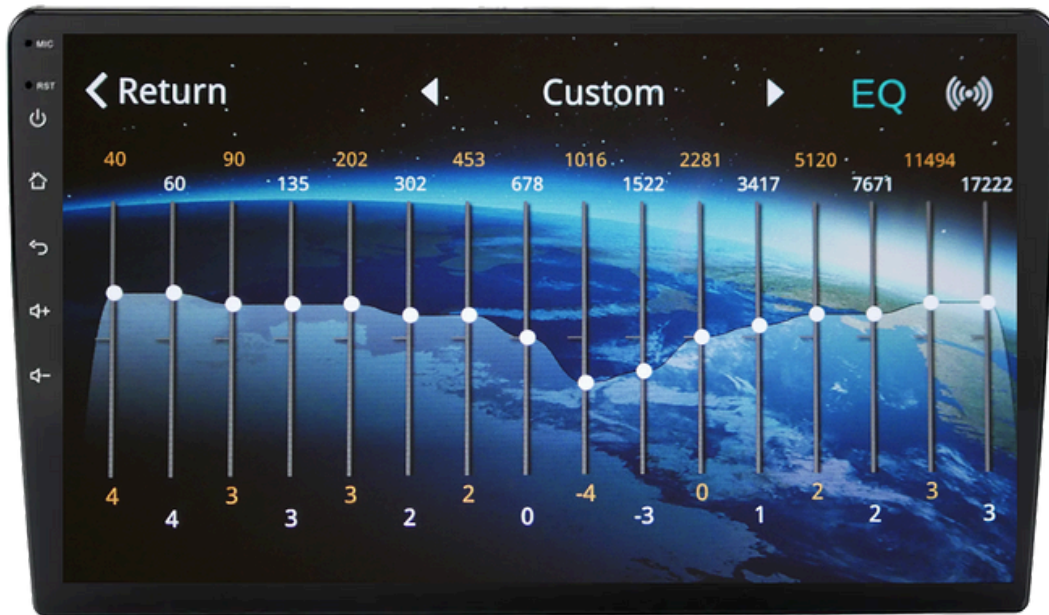
1. To connect via Bluetooth:
2. On your phone, open Settings > Bluetooth and turn Bluetooth ON.
3. From the list of available devices, find and select "CAR-\*\*\*\*."
4. If you prefer to use Bluetooth only for music and phone calls, choose the option "Use Bluetooth Only."
5. Once connected, you can:
6. Play music wirelessly through the car speakers
7. Make and receive phone calls via the head unit using your phone

## USB

### Connecting via USB

1. Insert your USB device into the USB port, usually located inside the glove box of the vehicle.
2. Open the glove box to access the port.
3. Once connected, the head unit will automatically detect the USB device.
4. On the screen, you'll see available options such as:
  - Music
  - Pictures
  - Videos
5. Select the option you want to use (e.g., choose Music to play songs stored on your USB).
6. ⚠ Ensure your USB device is formatted as FAT32 or exFAT, and media files are in supported formats (e.g., MP3, MP4).

## EQ

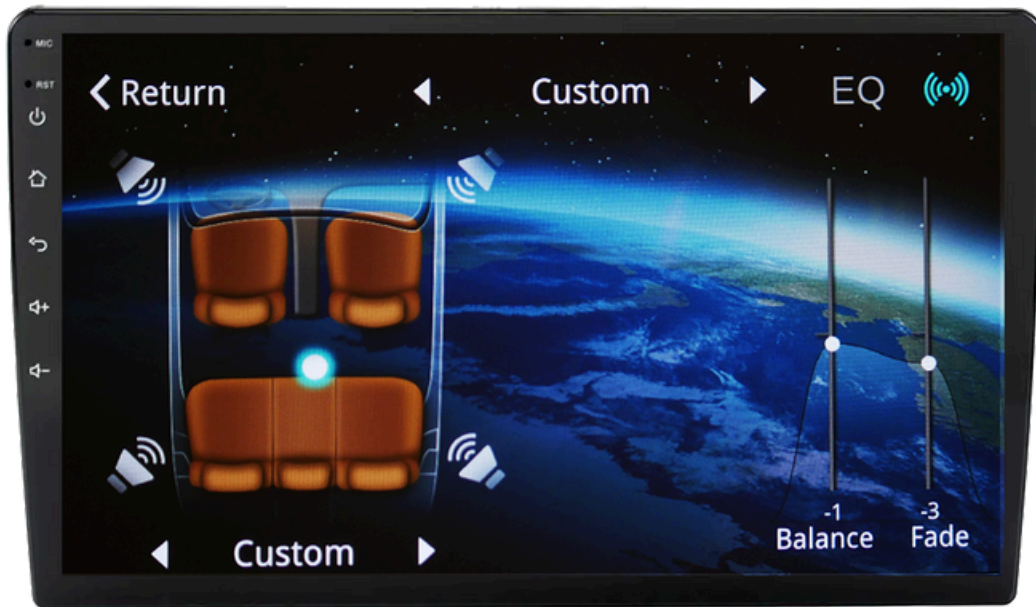


EQ Styles	Description
Rock	Strong bass and sharp treble for high-energy music.
Pop	Balanced and vocal-forward for modern hits.
Classic	Clean and natural, ideal for orchestral or instrumental tracks.
Jazz	Warm and detailed, highlighting smooth tones and instruments.
Electric	Boosted highs and lows for electronic and dance music.
Soft	Gentle, rounded sound for relaxed listening.
Standard	A well-balanced default profile for everyday use.
Custom	Manually adjust and save your personal EQ curve.

## EQ

Band	Frequency Range	Description
40 Hz	Sub-bass	Deep bass — adds rumble and power to low-end sounds.
100 Hz	Bass	Controls punchy bass, like kick drums and bass guitars.
250 Hz	Low-mid	Affects warmth and fullness in vocals and instruments.
630 Hz	Mid	Clarifies voice and instruments; too much can sound boxy.
1.6 kHz	High-mid	Boosts clarity and presence in vocals and lead instruments.
4 kHz	Presence	Adds attack to drums and sharpens vocal edges.
6.3 kHz	Treble	Enhances detail and texture in high-frequency sounds.
10 kHz	Brilliance	Adds brightness, sparkle, and airiness.
13 kHz	Ultra-high	Subtle enhancement of treble sharpness.
17.2 kHz	Extreme highs	Final layer of brightness; most noticeable on high-quality audio.

## EQ



This setting allows you to direct the audio focus to specific areas within the vehicle cabin.

To adjust the audio position:

1. Use the Balance control to shift sound between the left and right sides of the vehicle.
2. Use the Fade control to shift sound between the front and rear of the vehicle.

To manually set the audio focus:

- Tap and drag the blue on-screen position marker to your desired listening area (e.g., Driver, Front Passenger, Rear Seats).

For additional sound customization:

- Tap the EQ button located in the top right corner of the screen to access and adjust the equalizer settings.

## STEERING WHEEL CONTROL



### Steering Wheel Control (SWC)

Easily assign functions to your steering wheel buttons for safer, hands-free operation while driving.

How to Set Up SWC:

1. Go to the SWC settings menu on the head unit.
2. Press "Reset" to clear any previous settings.
3. Press a button on your steering wheel (e.g., volume up, next track).
4. On the screen, tap the function you want to assign to that button.
5. Repeat for each button you want to program.
6. When finished, press "Confirm" to save your settings.





# Wireless Apple CarPlay/Android Auto Linux System with OLED 9 inch Screen

*Model: 914D*

**User Manual**